



# Infiltratietechnieken

Burt Klos

Mariëlle van den Berg

Suleiman Abu Eïd



# agenda

**Agenda:**

**Waar, wanneer, waarom, waartoe, wie en wat**

**Perspectief: de huisarts**

**de orthopeed**

**echografie**

NHG vs NOV \*

Volgens richtlijn of juist niet?

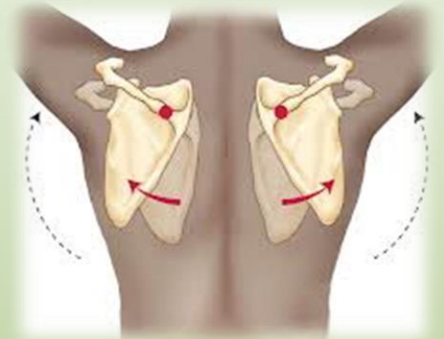


# Waar

- Schouder: GH, AC, bursa
- Elleboog: intra-articulair, lat epicondyl
- Pols: intra-articulair, Quervain, CTS?, Triggerfinger?
- Heup: bursa troch. intra-articulair?
- Knie intra-articulair, bursa pre-patellaris, pes?
- Enkel: intra-articulair, bursa calcanei
- **Waar niet?!**

# Waarom/waartoe

- Als diagnosticum (Neertest)
- Pijnstilling; pijnladder
- Voorwaarde voor behandeling  
bv oefentherapie olv fysio
- Verwachtingsmanagement!



# Wanneer

- Bij klinisch verd/dd of na X/echo?
- Als proefinfiltratie \*
- Pijn ondanks analgeticagebruik, niet als 1e
- Afh van ervaring/vaardigheid



# Wie/waar/wanneer niet:

- Niet in/tegen Achillespees; risico #
- **Wanneer niet:** fractuur, maligniteit of verdenking daarop
  - < 6 jaar
  - Allergie
  - Infectie
  - INR>> bij VKA, bij DOAC?, LMWH?,
  - Zwangerschap/lactatie, << lever- of nierfunctie?
  - Vaccinatie levend virus
  - pre-operatief 3 mnd, bij prothese 6 mnd
- \*Herhaalfreq **NHG**: desgewenst na 2-4 wk  
**NOV**: max 1 per 3 mnd

# Wat

- Methylprednisolon (Depo/Solu-Medrol) 6 wk
- Triamcinolonacetonide ( Kenacort)
- Bethametason (Celestone)



- Bijwerkingen:

syst risico afh van locatie/dosis: hormonaal, IADM!! (HbA1c>7), K/Ca-verlies, hoofdpijn, RR> of <,

lokaal: ? Chondrotoxisch, pees#, subcutane vetnecrose,

- Nabehandeling: Geen (bed)rust, knie/heup intra-art wel < activiteit

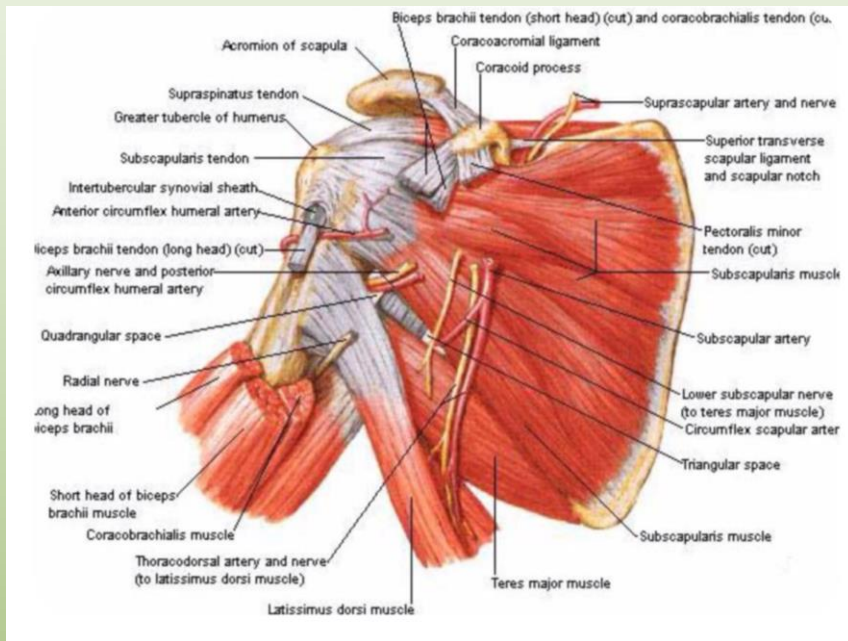
# Techniek

- [NHG-Instructiefilms - Nederlands Huisartsen Genootschap](#)
- [RheumTutor MSK Injection Videos - Demo Series – YouTube](#)
- Alg: handschoenen ??  
desinfectiemiddel??  
naaldwissel??

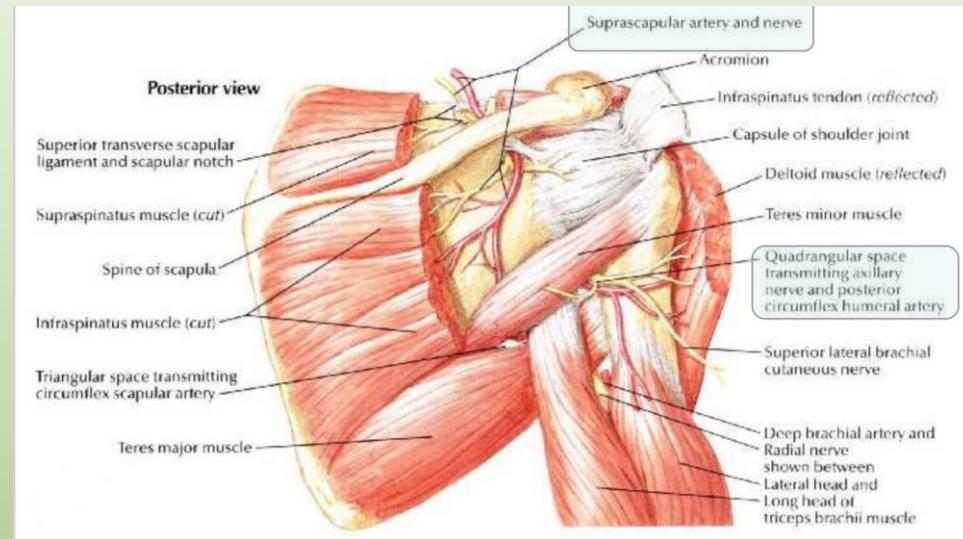


# schouder

## Anterior:



## posterior:



# Schouder

- Bursa SA posterior:

✎ acromion

✎ clavicula

\* SA = IAGH; softspot

10 cc 1:9

- AC:

1-2 cc 1:1



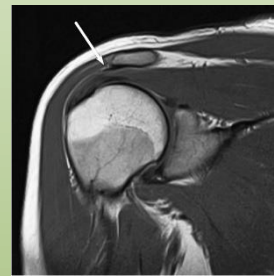
AC verloop



cuffarthropathie



Bony spur



- Biceps: echogeleid of intra-articulair

# Schouder

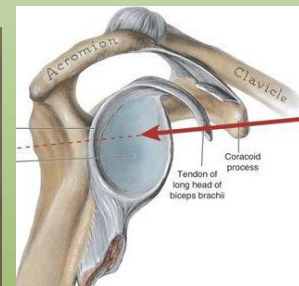
- Intra-art GH posterior:

- ✎ acromion
- ✎ clavicula
- ✎ proc coracoideus



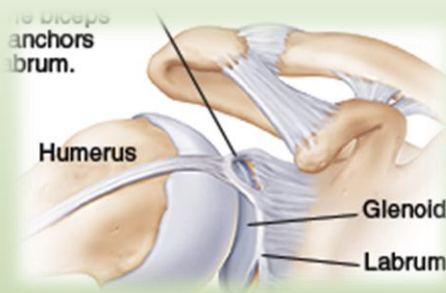
## Intra-art GH Anterior:

1 cm lat coracoid  
ri posterocaudaal



# Intra articulaire glenohumeraal

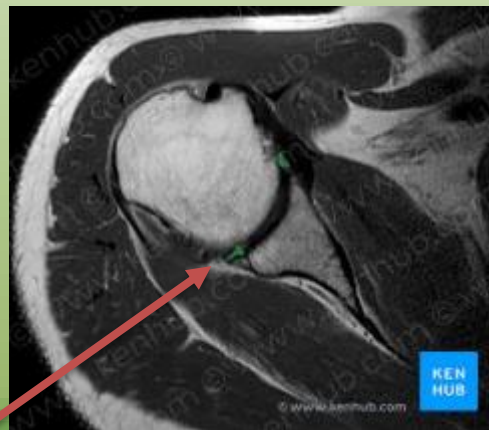
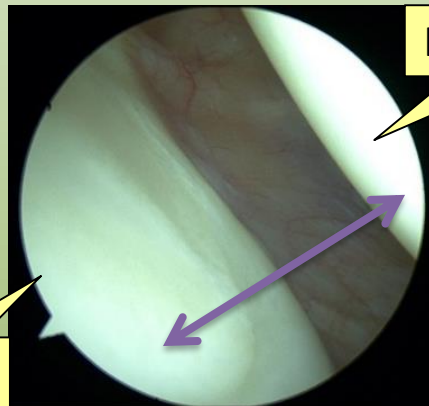
## Zeer beperkte toegang



Omarthrose





rotatorcuff arthropathie




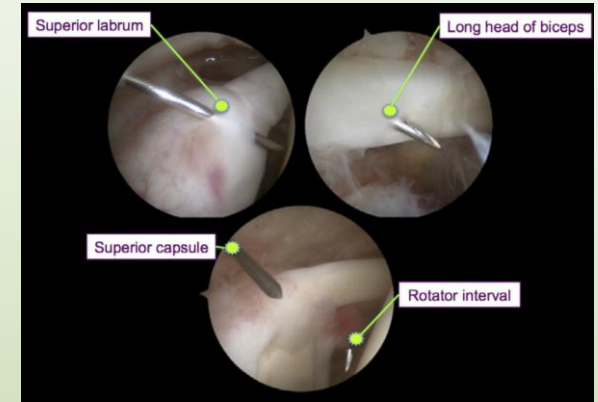
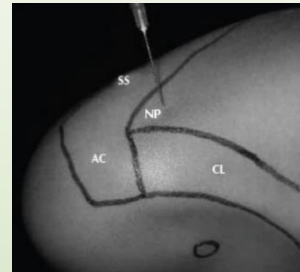
# Schouder

- Intra-art GH Neviaser
- superomediaal:

 idem

 1 cm

volg humerus 



Outcome	Anterior technique	Superomedial techn
Accuracy <sup>a</sup>	55%	84%*
Penetration sites		
Rotator interval	69%	4%*
Long head of biceps tendon	28%	4%*

Nieuw Anterieur

mid AC-coracoid

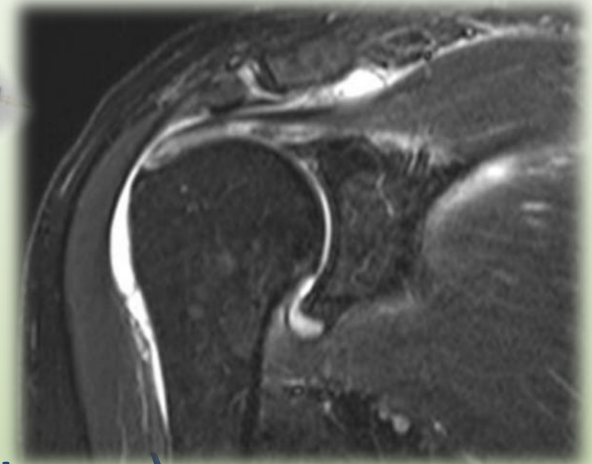
arm in exo

posterocaudaal

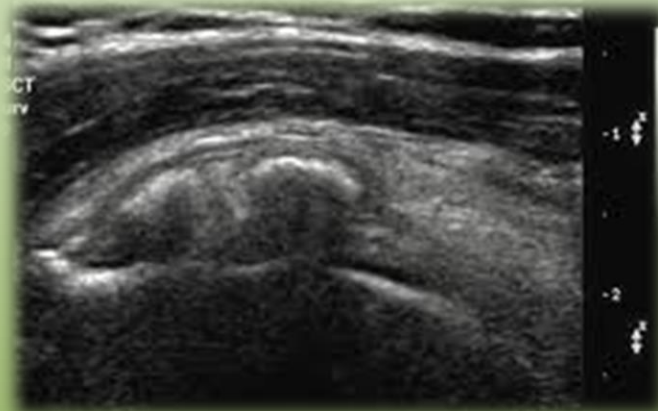


# Impingement: Bursitis/tendinitis

Bursitis/tendinitis::



Tendinitis of calcificatie (barbotage)



# Echogeleid?

- Op indicatie en (on)afh van vaardigheid/
- Belang documenteren/pragmatische combi
- Cochrane: more accuracy.....
- moderate evidence little –no diff on pain&function
- low evidence +effect participant assessed effect (-4 to 62%)
- low evidence little-no effect QoL and adverse events



- [CD009147.pdf \(nih.gov\)](https://doi.org/10.1002/CD009147)



# Elleboog

- Lat epicondyl: 2 cc 1:1



- Bursa:  
eenmalig  
2-4 cc 1:1-4






- Intra-articulair:
  - ✎ lat epicondyl
  - ✎ radiuskop
  - ✎ olecranon2-4 cc 1:4

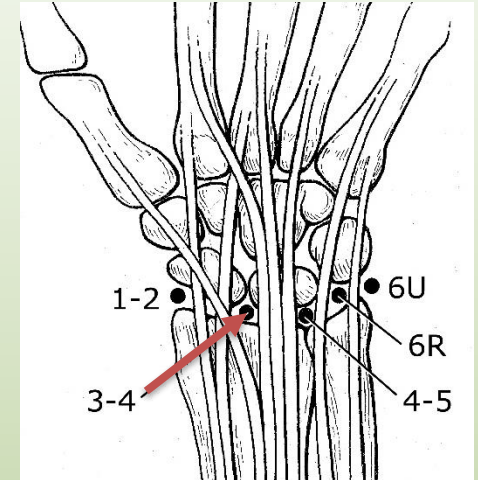




# Pols

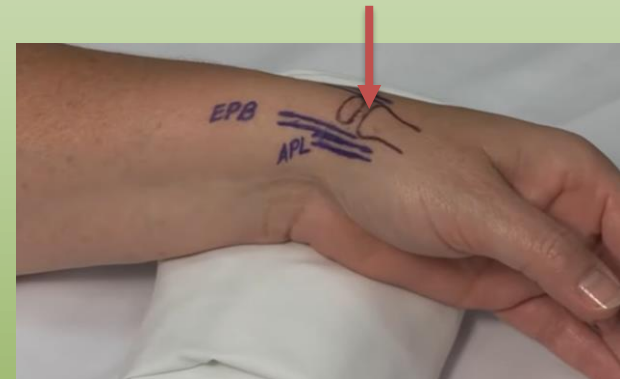
- **Radiocarpaal:**

-  tub. v Lister
-  distale radius
-  “3-4 portal” 1 cm distaal van TvL



- **CMC-I:**

- Ext Poll Brevis/APL
- Ext Poll Longus
- basis MC-I
- Os Trapezium



- **CTS:** echogeleid

# Hand

- Triggerfinger:

- ✎ A1 pulley
- niet IN pees!



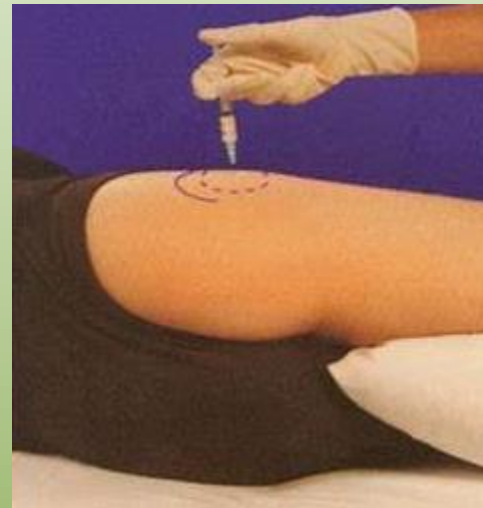
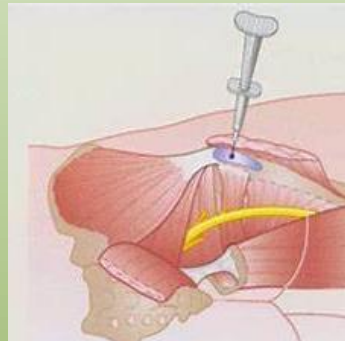
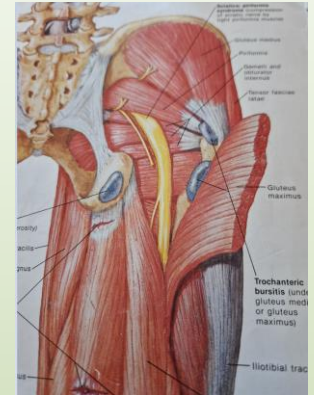
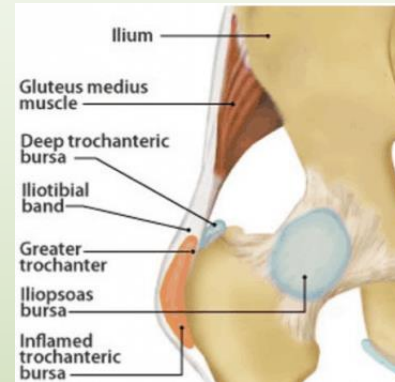
- Quervain:

- ✎ Ext Poll Brevis en Abd Poll Longus
- ✎ proc styl radii
- ✎ CMC-I



# Bursa trochanterica

- Opp onder tr iliotibialis
- Diepe onder m gluteus med
- Iliopsoas bursa : echo!
- X/echo?



# Knies intra-articulair

lateraal:

in extensie

1/3 – 2/3 overgang

lateral tilt patella

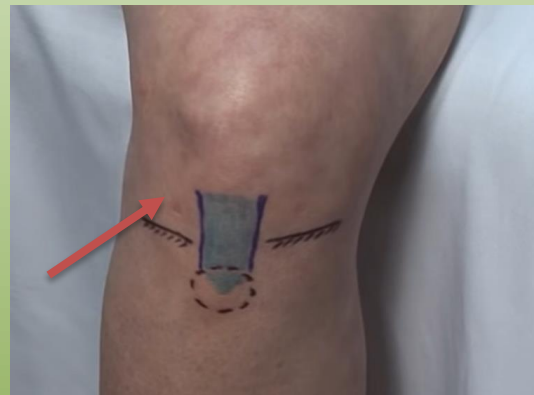
superolateraal (91%)

Anterior: (lat)

✎ tibiaplateau

✎ patellapees


softspot 1x1 cm




# Knie pes anserinus

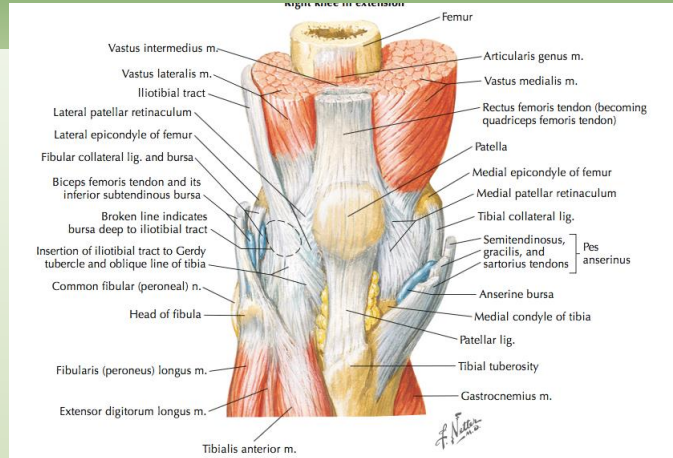
- Bursa pes anserinus

 sartorius

 semi-T

 tibiaplateau

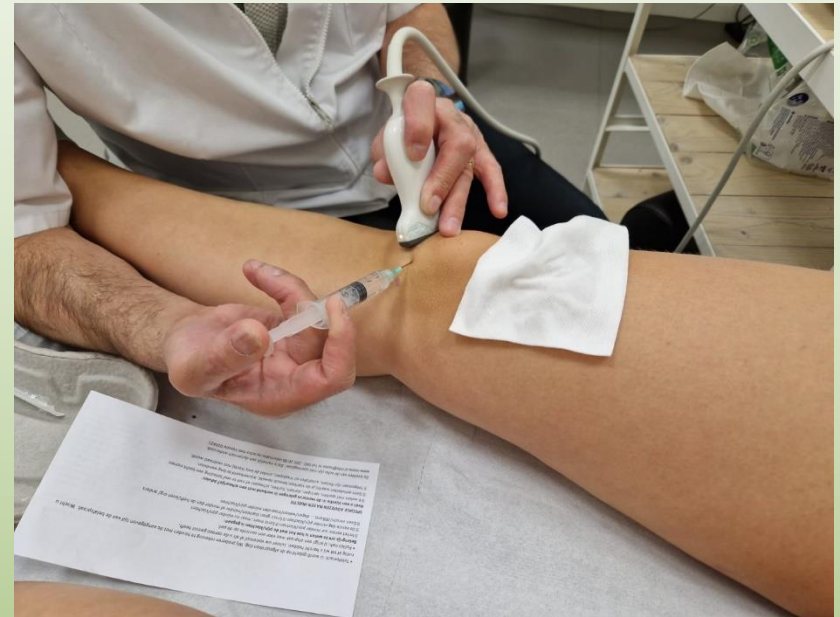
 tub. Tibia



gering flexie, exo, tot op bot – 2 mm.

# Knie pes echogeleid

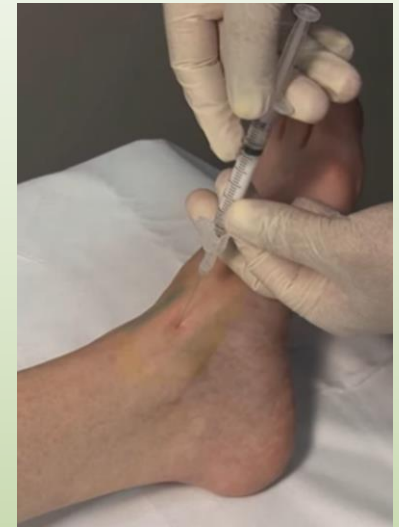
- Bursa pes anserinus



# Voet/enkel

- Anterieur enkel, BSG

- ✎ med malleolus
- ✎ tibiaplafond
- ✎ talus
- ✎ tib anterior



## Hielspoor

- ✎ med malleolus
- ✎ pmm

NIET plantair prikken



# Echogeleid

- Op indicatie en (on)afh van vaardigheid/
- **NEJM 2010:** n=184, schouder, elleboog, pols, knie enkel  
more accuracy, 83 vs 66% .....  
no diff on pain&function



